



## Troubleshooting Tips for Opening KMZ Files in Google Earth for Windows

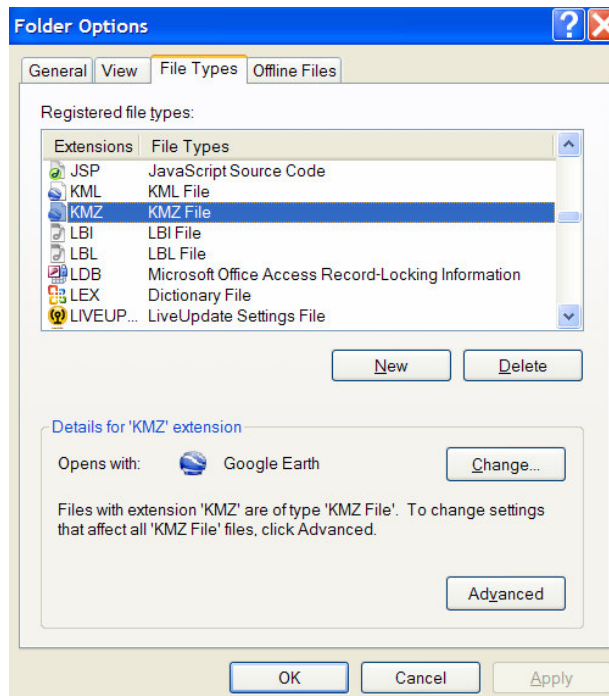


February 2009

When using the Landcover Map pages (<http://forestthreats.org/tools/landcover-maps/landcover-maps>), if you have any troubles getting the linked KMZ files to open automatically in Google Earth, try these steps.

### 1. Check the KMZ File Associations.

- a. Open Windows Explorer by going to Start menu, All Programs, Accessories.
- b. Click Tools and select Folder Options.
- c. Click the File Types tab.
- d. Scroll down and find the KMZ extension entry.
- e. In the “Details for ‘KMZ’ extension” section, it should say “Opens with:” Google Earth. If this is correct, then move to step 2.



- f. If you get a message saying your extensions have been customized and you must click the Restore button, click Restore. Your KMZ extension should now show “Opens with:” as Google Earth.
- g. If you do not get a Restore button, click the Change button and select Google Earth from the list. Click OK.
- h. While in this dialog, repeat steps e-g for the KML extension as well.
- i. Click OK again to close the Folder Options window.
- j. Try the download again. If it does not work, move to Step 2 below.



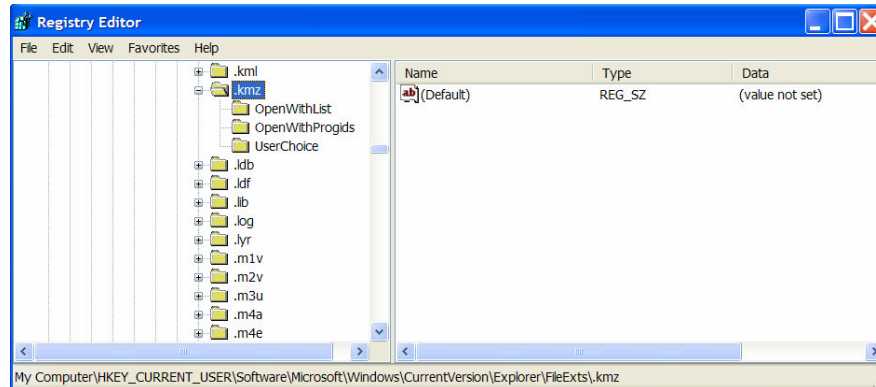
## Troubleshooting Tips for Opening KMZ Files in Google Earth for Windows



February 2009

### 2. Edit the Windows registry.

- a. Open the Start menu and click Run.
- b. In the Open line, type regedit and click OK.
- c. Using the tree control on the left, drilldown to this registry key  
HKEY\_CURRENT\_USER\Software\Microsoft\Windows\CurrentVersion\Explorer\FileExts\.kmz. If you do not have this key, skip to Step 3.
- d. Click on the key folder on the left. On the right side you should see an entry called (Default). If you see an entry called "Application" linked to "googleearth.exe", delete the entry by right clicking the entry and picking Delete. (KML files are still linked to Google Earth through the OpenWithList subkeys.) When done, the screen should look like this:



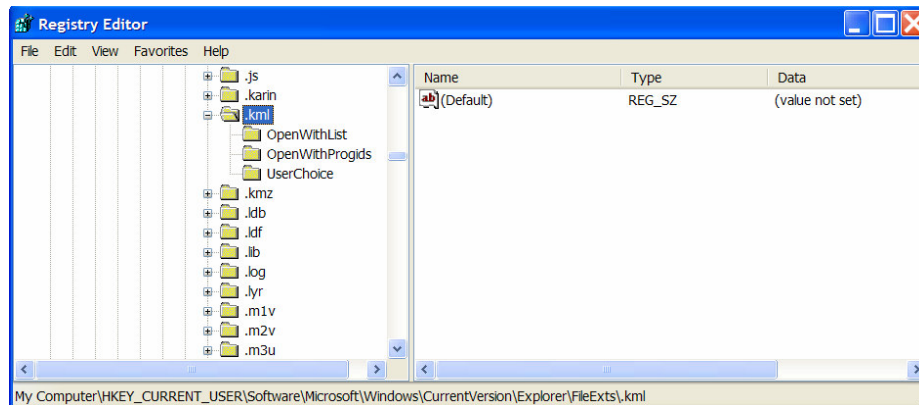
- e. Using the tree control on the left, drilldown to this registry key  
HKEY\_CURRENT\_USER\Software\Microsoft\Windows\CurrentVersion\Explorer\FileExts\.kml.
- f. Click on the key folder on the left. On the right side you should see an entry called (Default). If you see an entry called "Application" linked to "googleearth.exe", delete the entry by right clicking the entry and picking Delete. (KML files are still linked to Google Earth through the OpenWithList subkeys.)



# Troubleshooting Tips for Opening KMZ Files in Google Earth for Windows



February 2009



g. Close the Registry window.

### 3. Download the file manually.

- a. Instead of clicking the KMZ link, right-click it and select Save Target As (in Internet Explorer) or Save Link As (in Firefox). Select a location on your PC and save the file.
- b. Open Google Earth and manually load the file by opening the File menu, clicking Open, and browsing to the file you downloaded.

### For more assistance, please contact:

Technical issues: Todd Pierce, University of North Carolina at Asheville, [tpierce@unca.edu](mailto:tpierce@unca.edu).

Data issues: Stephen Creed, US Forest Service, [stephencreed@fs.fed.us](mailto:stephencreed@fs.fed.us).